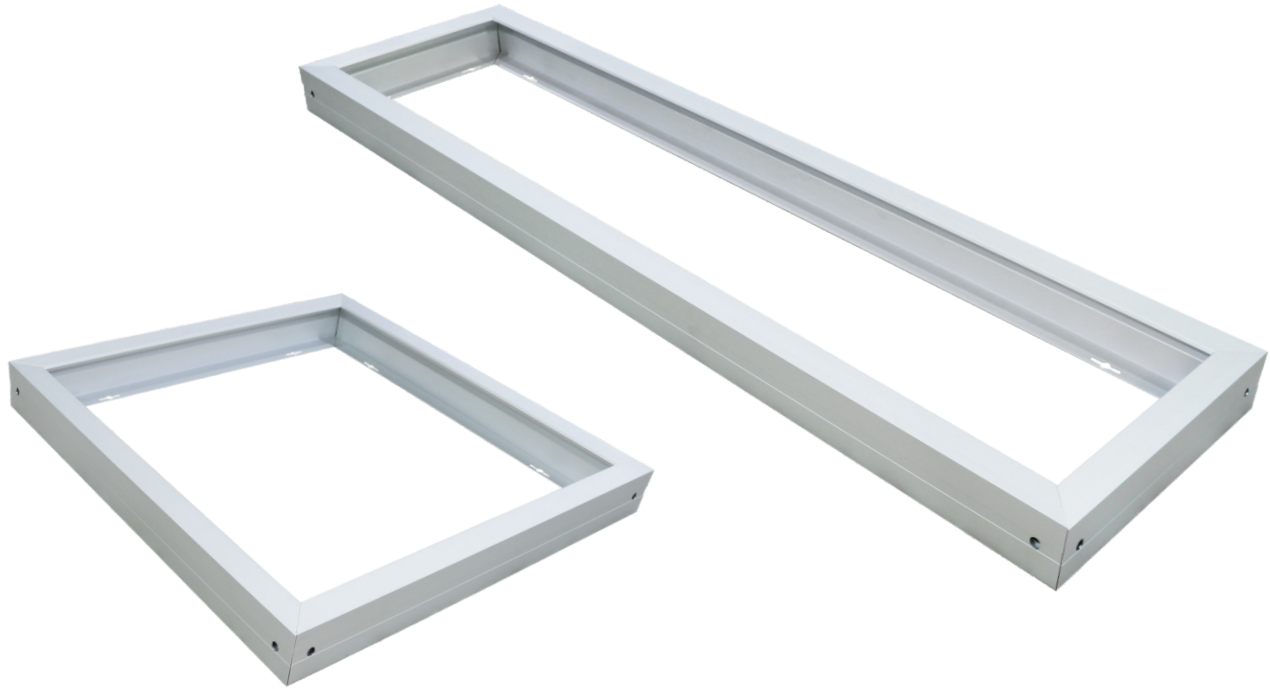


# SPARE PART

## LED PANEL LIGHT FRAME

www.aigostar.com



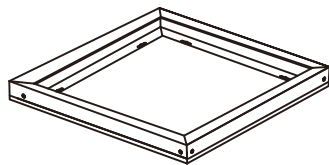
### PACKING

20pc/WHITE box (600x600)  
10pc/WHITE box (300x1200)

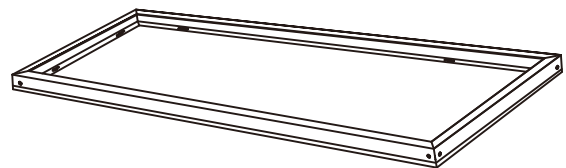
<b>Hg</b>	<0.00%
	optimal Ta=-10°C-40°C

### Size

600x600mm



300x1200mm



product code	Model	PCS/CTN	Size	certification
001475	MARCO LUZ DE PANEL LED-PLATA	20	600x600mm	CE
001499	MARCO LUZ DE PANEL LED-BLANCO COMO LA LECHE	20	600x600mm	CE
001482	MARCO LUZ DE PANEL LED-PLATA	10	300x1200mm	CE
001505	MARCO LUZ DE PANEL LED-BLANCO COMO LA LECHE	10	300x1200mm	CE



### warning

- ◆ Power should be cut off before installation, maintenance or inspection.
- ◆ Please install and use the light strictly according to the instruction.
- ◆ Do not disassemble or remold the product at will to avoid accident of electric shock or light falling.